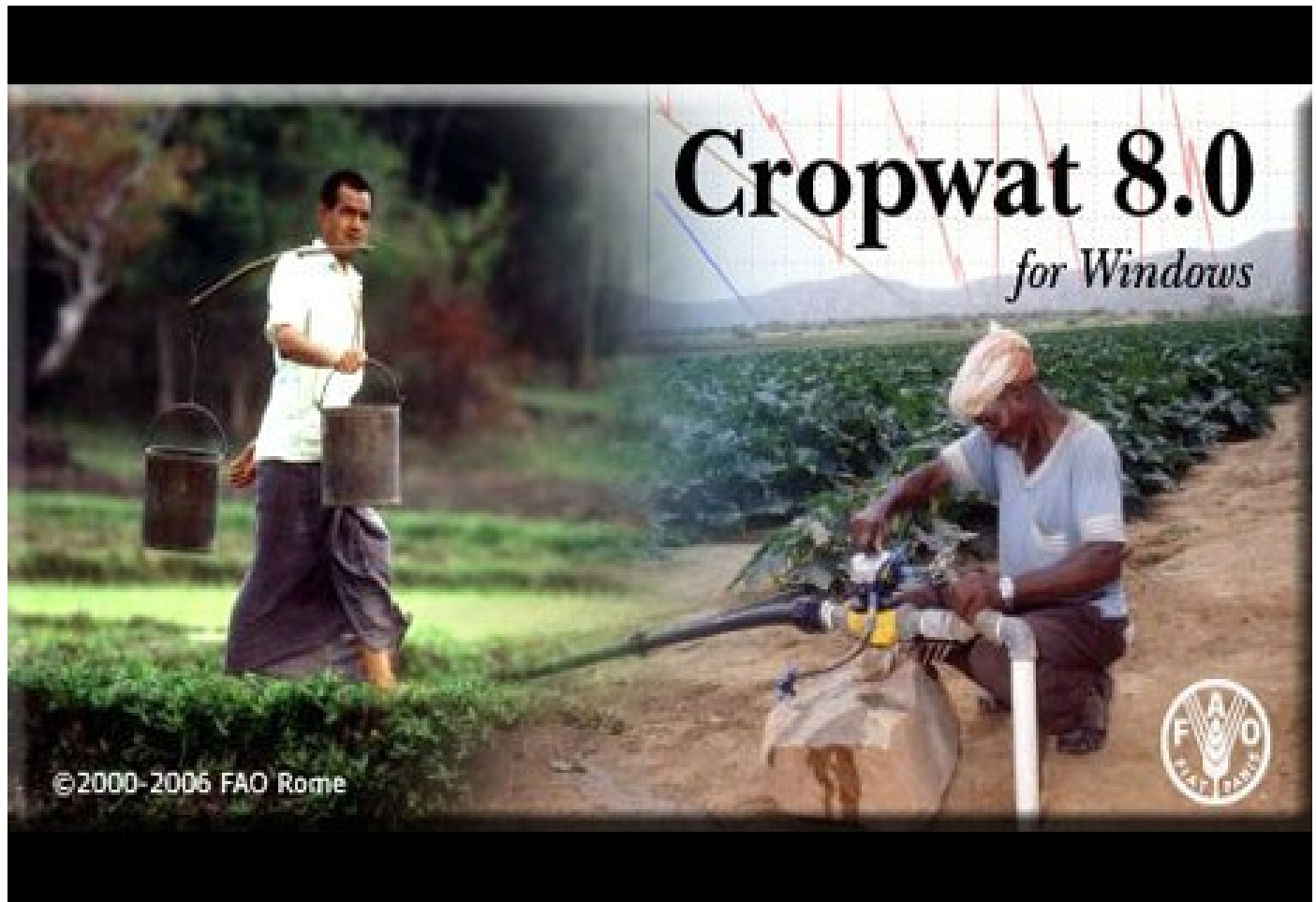


## IT Tools for CWR Estimation

---

### CROPWAT



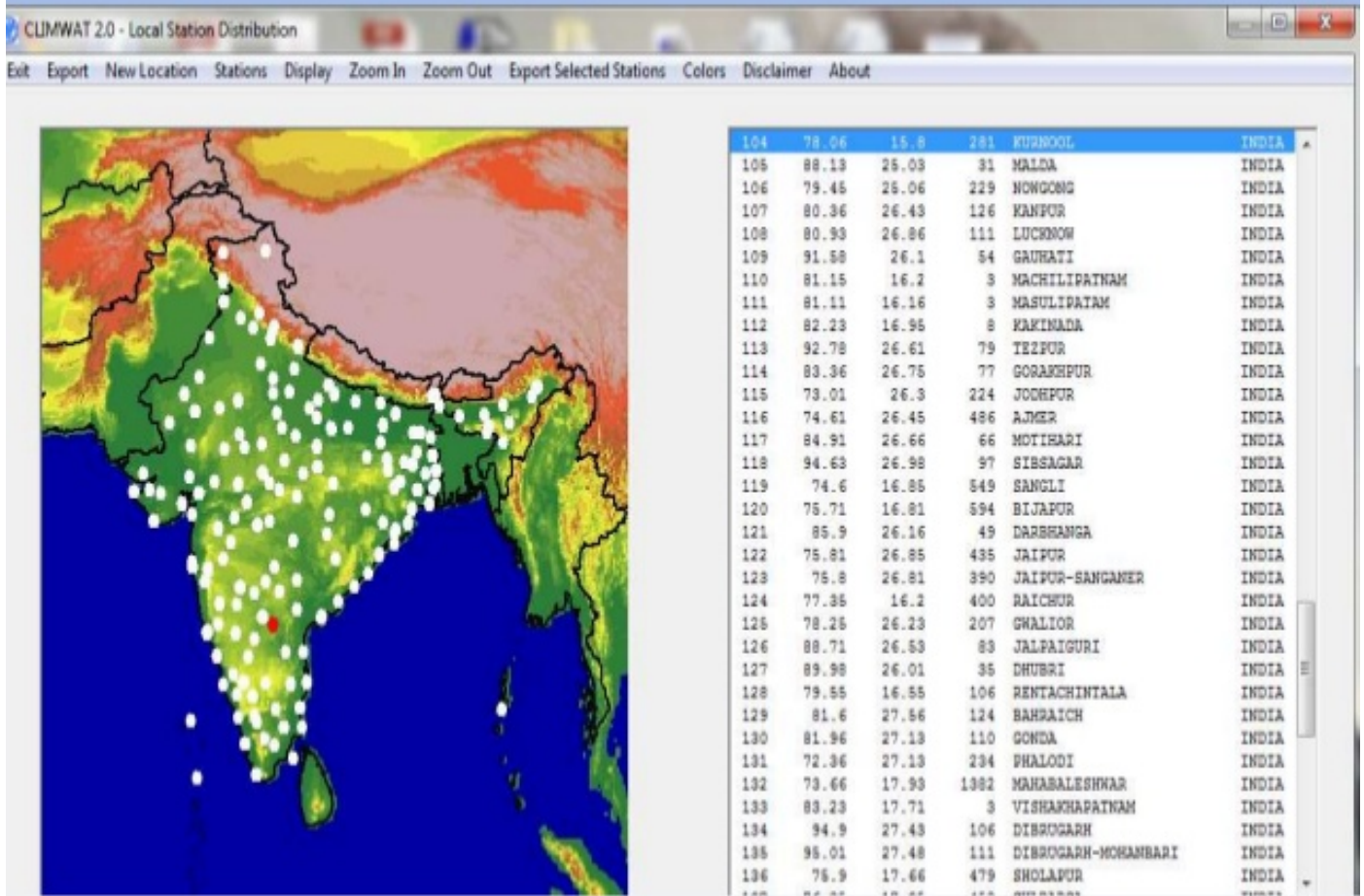
### GISAREG

The screenshot displays the ArcView GIS 3.2 interface. The main window shows a map of agricultural fields with various patterns overlaid. The 'Spatial Data' panel on the left lists layers: 'F\_ggpr12.shp', 'Power', 'Alpaca', 'Maize', 'Korkeolar', 'Trigo', and 'sgul\_20000820\_p'. The 'Simulation Table' window is open, showing a table with columns: 'Id', 'Crop', 'Seed\_date', 'Harv\_date', 'Irrig', and 'Irrigation'. The 'Scenarios Manager Window' is also open, showing 'Current Simulation Scenario: default' and a list of scenarios: 'Default' (checked) and 'Scenario\_1'. Buttons for 'Compute', 'Select', 'Map', 'New', and 'Delete' are visible.

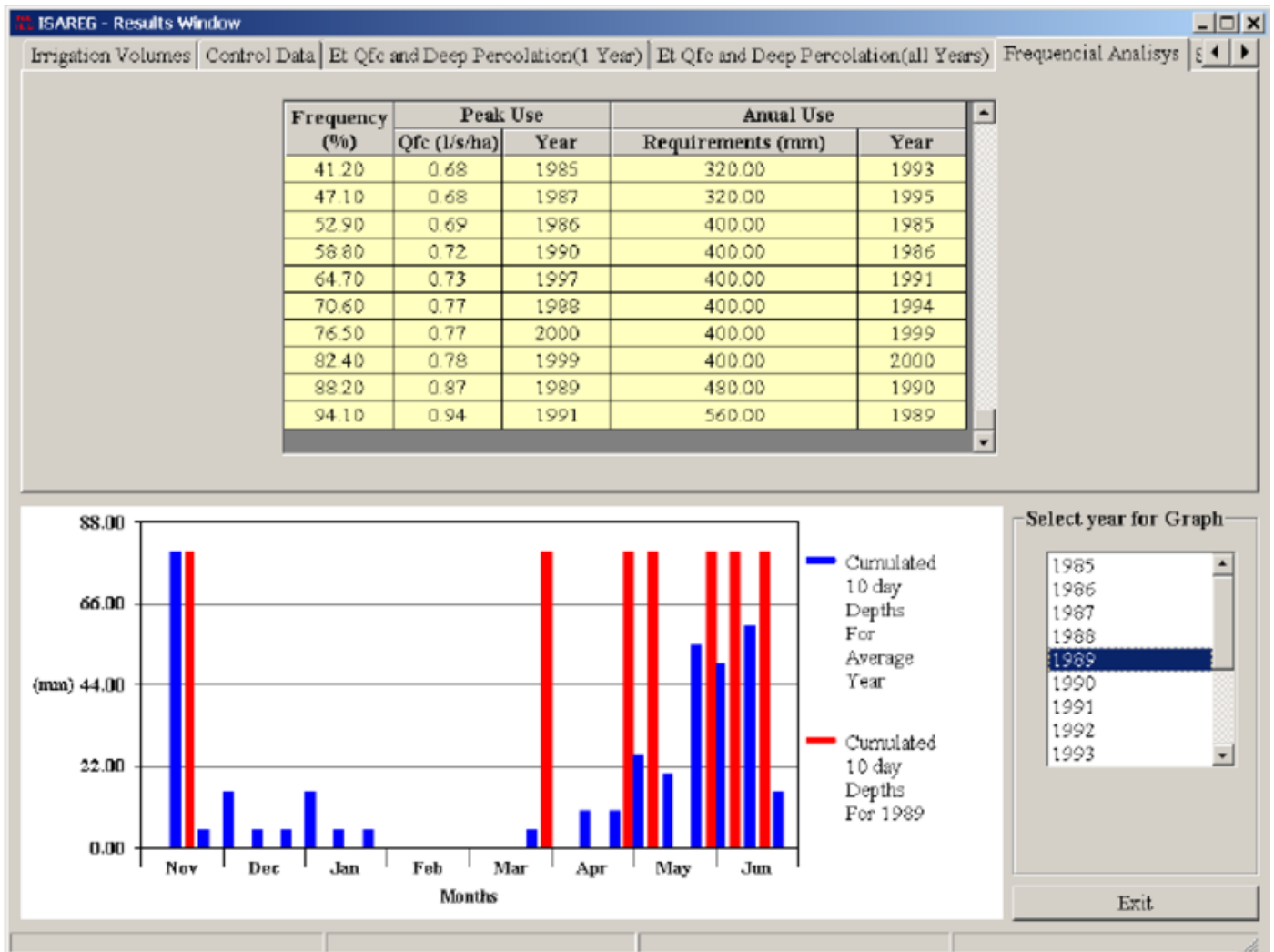
Id	Crop	Seed_date	Harv_date	Irrig	Irrigation
5	WW	27 October	14 June	Prec	OY
6	Cot	14 April	26 September	Fur_Nar	OY
7	Cot	16 April	28 September	Fur_Nar	OY
8	Cot	16 April	29 September	Fur_Nar	OY
9	Cot	17 April	29 September	Fur_Nar	OY
11	WW	28 October	15 June	Prec	OY
19	Cot	09 April	21 September	Fur_Nar	OY
21	Cot	11 April	23 September	Fur_Nar	OY
22	Cot	14 April	26 September	Fur_Nar	OY
23	Cot	09 April	21 September	Fur_Nar	OY
25	Cot	17 April	29 September	Fur_Nar	OY
27	WW	21 October	08 June	Prec	OY
28	WW	02 November	20 June	Prec	OY
29	Cot	08 April	20 September	Fur_Nar	OY
30	Cot	10 April	22 September	Fur_Nar	OY
31	Maize	05 May	12 September	Fur_Nar	OY
32	Cot	08 April	20 September	Fur_Nar	OY

## CLIMWAT

# STUDY AREA



ISAREG etc.



Next Chapter >>  
 Scholarly Information Link