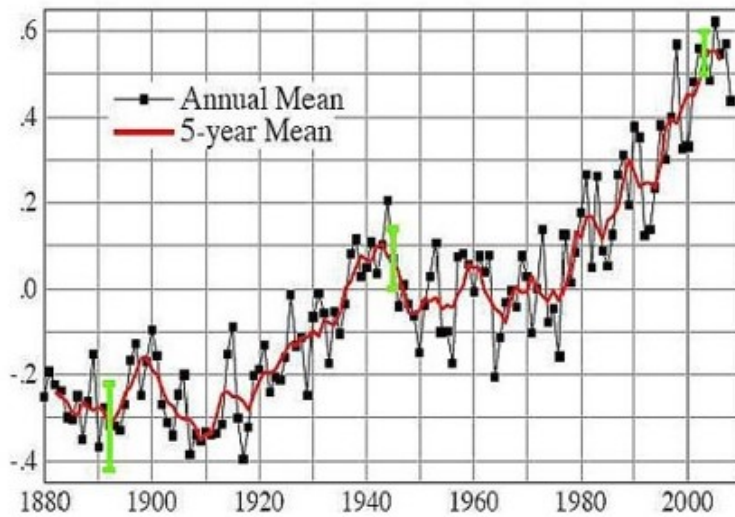


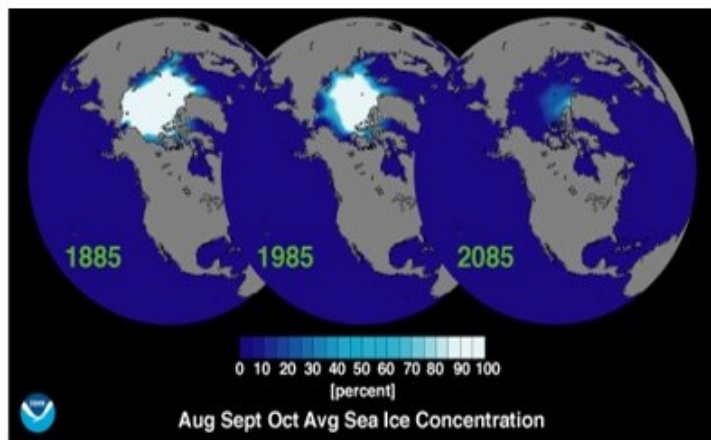
# Tends

---

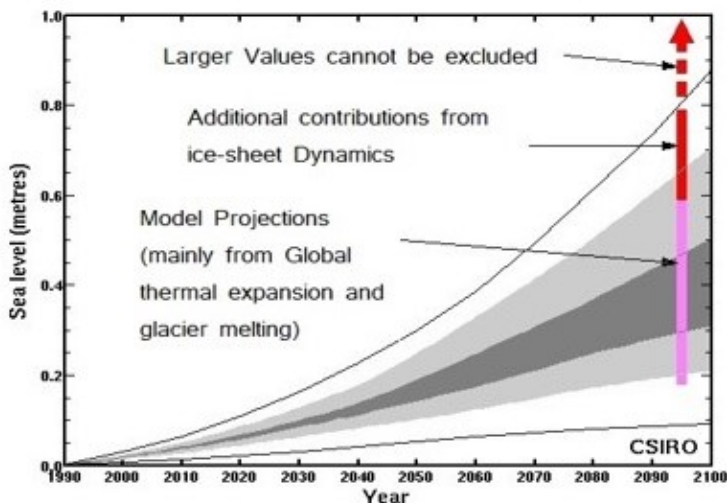
---



In last 100 years,  
Increase in  
temperature has  
been observed

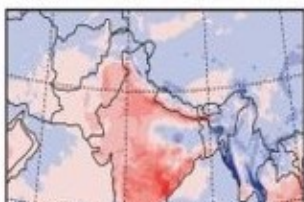


As per projections of  
NASA the ice sheet of  
arctic will reduce to a  
large extent by 2085

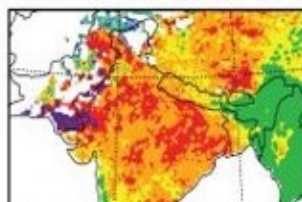


As per IPCC there is a  
possibility of sea level  
rise of more than  
0.8m within next  
century

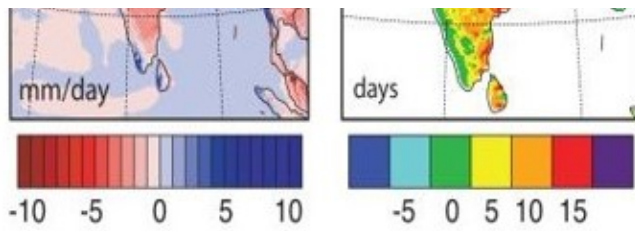
Future Change in Summer  
Convective Precipitation



Future Change in  
Monsoon Onset Date



Change in Global or  
Regional climate  
patterns, evidently



From mid to late 20th  
century onwards

Next Chapter >>  
**Causes of Climate Change**